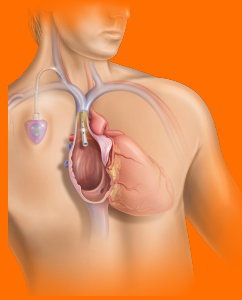


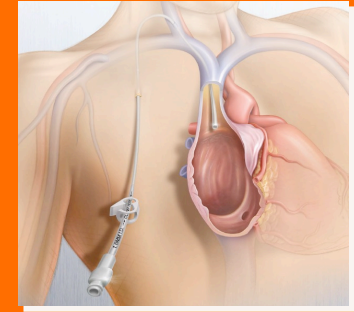
POWERPORT[®]

Implantable Port



Hickman[™] / Leonard[™] Broviac[™]

Central Venous Catheters



Enables Reliable Venous Access:

- Receive IV Therapies
- Reduce repeated needle sticks
- Receive contrast-enhanced CT (CECT) scans

Easily Identifiable:

- Soft Palpation Points on Septum
- Unique triangular port shape
- Radiopaque Identifier

Enables Superior Imaging:

- Withstands 5 ml/s power injection
- @300psi Pressure setting

- Extensive line of vascular access devices for long-term care
- Available with percutaneous introducer kit to facilitate placement
- Time-saving repair kits extend catheter life
- Silicone construction for short or long-term use
- Large portfolio ranging from 1-3 lumen and 2.7F to 12.5F

Please consult product labels and instruction for use for indications, contraindications, hazards, warnings, and precautions.
BD Switzerland Sarl Terre Bonne Park – A4, Route De Crassier, 17, 1262 Eysins, Vaud, Switzerland T: +41 21 556 3000 0123 2797 BD, the BD Logo, Hickman, Leonard & Broviac Central Venous Catheters are trademarks of Becton, Dickinson and Company or its aliases. © 2022 BD. All rights reserved. 0722/6354 BD-70233

Palindrome™ Precision tunnelled catheters

Address the challenges of dialysis catheters

Insertion

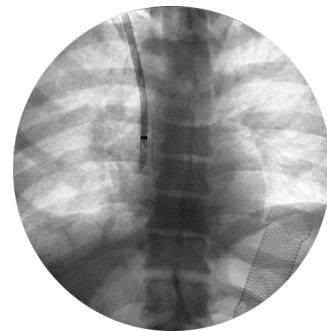


VenaTrac insertion stylets



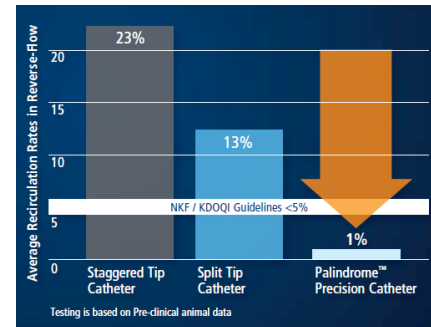
Optimized tip geometry

Tip visualization



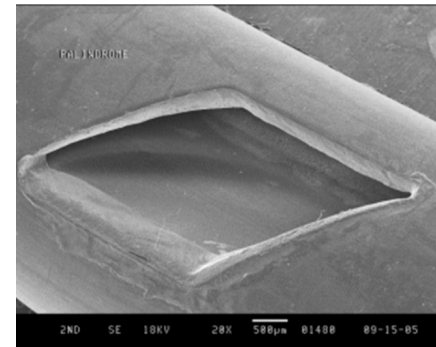
Tungsten marker band

Recirculation



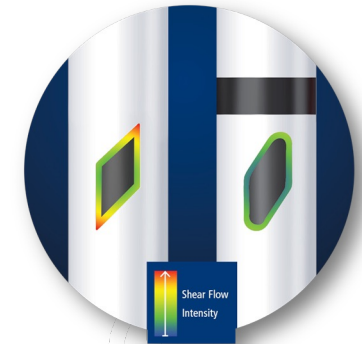
Symmetric tip

Positional occlusion

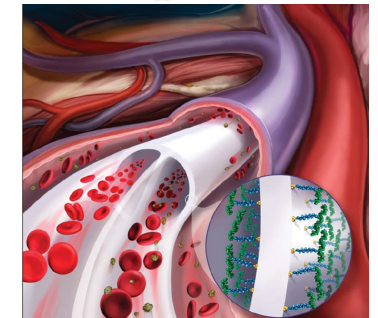


Laser-cut side slots

Clot formation



Laser-cut side slots



Heparin coated version