

Central lines and ports

Coordinators:

Alexia Dabadie, David James Tuite

Participating corporate partners:

BD

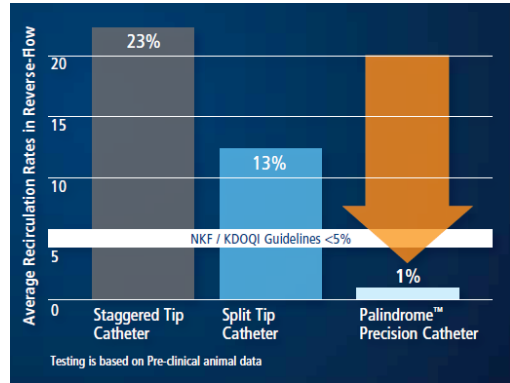
Mozarc Medical

There are a variety of different similar products for this procedure beyond the ones demonstrated in this session.

Palindrome™ Precision tunnelled catheters

Address the challenges of dialysis catheters

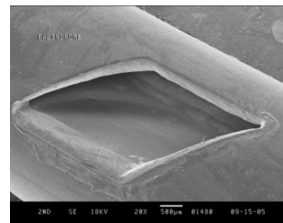
Recirculation^{1,2}



Less than 1% in forward or reverse flow†

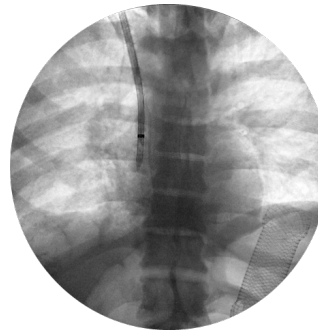


Symmetrical tip



Smooth laser-cut side slots

Tip visualization³



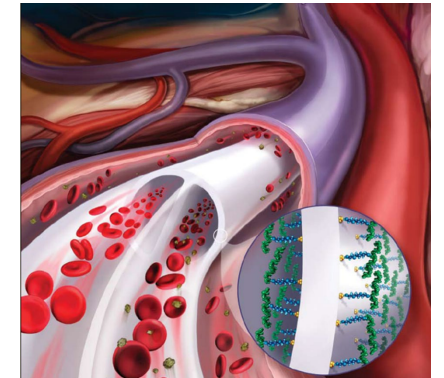
Tungsten marker band

Insertion⁴



VenaTrac™ stylets for an over-the-wire insertion technique

Clot formation and thrombus^{1,5}



Heparin coated version

†In preclinical model

1. Internal Test Report 50136-176-MS-11 (Testing conducted on Palindrome™ Precision Catheter)
2. Internal Data Validation 136-031-MAN-04 (Testing conducted on Palindrome™ Chronic Catheter)
3. Internal Test Report 50136-179-MS-11
4. Mojibian H, Oneal P, Eliseo D, Tal M. VenaTrac device for over-the-wire placement of chronic dialysis catheters. J Vasc Access. 2010;11(4):342-345
5. Internal Test Report 136-041-MAN-05 (Testing conducted on Palindrome™ H Chronic Catheter)