

Tumour ablation: planning, robotics, monitoring and assessment for ablation

Coordinators:

Reto Bale, Santiago Mendez Alonso

Participating corporate partners:

Cascination

GE Healthcare

Medical Templates

Philips

Varian

There are a variety of different similar products for this procedure beyond the ones demonstrated in this session.



IMACTIS[®] CT-Navigation[™] for Interventional Radiology



© 2023 GE HealthCare. GE is a trademark of General Electric. Company used under trademark license.

IMACTIS is registered.
CT-Navigation is a trademark of GE HealthCare.



THE CUBE NAVIGATION SYSTEM

CT-NAVIGATION THAT FITS IN THE PALM OF YOUR HANDS



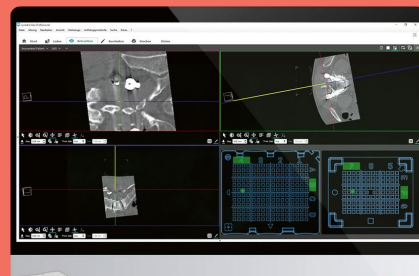
Increased accuracy
Significantly better targeting



Improved efficiency
Overall lower intervention time



Fewer control scans
Reduced number of CT scans



The System consists of:

- Disposable instrument guide (Cube)
- Made intelligent with planning software



Double-angulated
punctures



Challenging
access routes



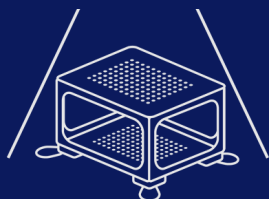
Procedures which
require a needle
holder

Our workflow - as easy as 1-2-3



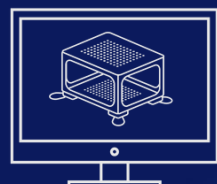
PLACE

Place Cube on the
area of intervention



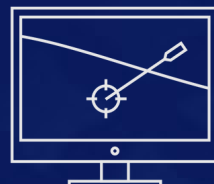
SCAN

Scan Cube and
target



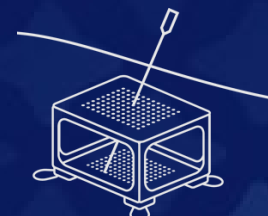
REGISTER

Transfer scan to software
& register Cube



PLAN

Plan needle trajectory
using software



PUNCTURE

Use suggested coordinates
and perform puncture

Philips XperGuide and XperGuide Ablation

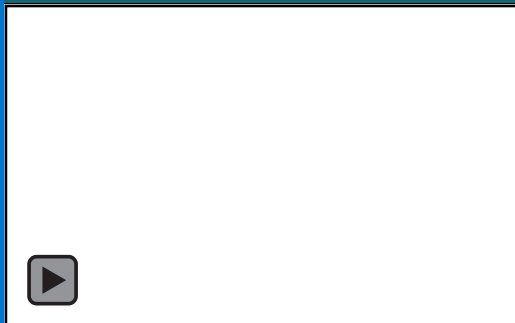
Comprehensive solutions for planning and guidance of biopsy and ablation procedures

Azurion with FlexArm Image-guided therapy system



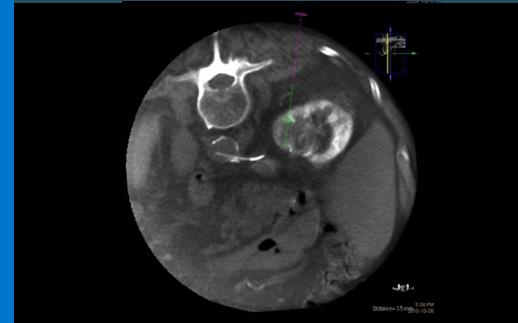
- Ceiling-mounted system for unlimited imaging flexibility
- Ultra-low X-ray dose with ClarityIQ
- Full tableside control of images and applications

SmartCT CBCT acquisition



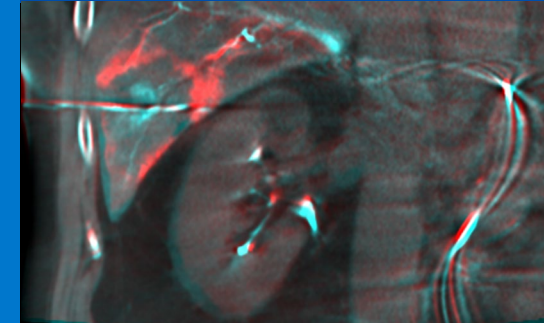
- 3D image acquisition guidance
- Full liver coverage
- Automatically acquires 2 phase scans
- Zero-dose isocentering

XperGuide Biopsy



- Multiple virtual needle path planning and guidance
- Segment in pre- or peri-interventional 3D images and overlay on intra-op CBCT

XperGuide Ablation Ablation



- Shows needle characteristics
- Unique Parallax Correction for off-center lesions
- Insertion plan updates post-needle insertion, and reviews tumor coverage on CBCT